

Sentinel

Social and Environmental Trade-Offs
in African Agriculture

August 2019 Newsletter

Dear Colleague,

We are pleased to share with you the latest news and blogs from the Sentinel project website. To find out more, visit www.sentinel-gcrf.org or click on the links below.



News

[Horizon scanning survey - deadline extended to 31 August](#)

We are interested in hearing your views. We are recruiting participants and organisations that are involved in and/or work in sub-Saharan Africa to contribute research questions to our horizon scanning activity, conducted in partnership with the International Water Management Institute (IWMI).

The deadline for submitting your research questions for the first stage of the horizon scanning has been extended to **31 August 2019**. Submissions can be entered via a short survey form [here](#).

The survey has also been translated into French which you can find and share [here](#).



Blog

[Surveys of study sites get under way in Ethiopia](#)

Sentinel researchers and field teams have begun the process of shortlisting sites where there has been expansion of agriculture into natural habitats, conducting rapid assessments of the socio-economic and environmental impacts of agricultural expansion in each site.

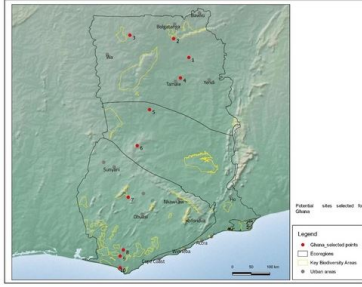


Blog

[Impacts of agricultural expansion: what will we explore?](#)

Tim Newbold

Do areas where crops are grown overlap with areas that are naturally high in biodiversity? Sentinel researchers at University College London outline key questions they will be addressing through Sentinel research, and the methods they are using to explore national-level trends.



Blog

[Site selection for Sentinel](#)

Geoff Griffiths

Geoff Griffiths from the University of Reading outlines the methods used to identify the study sites for the project to better understand the extent, nature and impacts of agricultural expansion into natural habitats.

Sentinel is an interdisciplinary research project seeking to address the challenge of achieving 'zero hunger' in sub-Saharan Africa, while at the same time reducing inequalities and conserving ecosystems.



This email is from International Institute for Environment and Development (IIED), 80-86 Gray's Inn Road, London, WC1X 8NH

